



## Headteacher's Roundup

As the Autumn term comes to an end, it has been a joy to look back on a busy and exciting few months filled with learning, creativity, and festive fun across the school.

A big thank you to everyone who supported our fundraising for Children in Need. Through a variety of games, challenges, and activities, the school community raised almost £500 for this fantastic cause. It was wonderful to see pupils and staff working together to make such a positive difference.

Reception children had a very special first school trip to the cinema to watch Dogman. Their excitement and excellent behaviour made everyone proud and created lovely memories for their first year at school.

Our Chess Club had an amazing experience at the London Chess Classic. Pupils took part in workshops with expert coaches, played friendly matches with other young players, and even watched demonstrations from world-famous Chess Grandmasters. The day inspired everyone and helped develop their problem-solving and strategic thinking skills.

Children in Years 1 to 6 enjoyed a trip to the Core Theatre to watch Aladdin. The performance was full of laughter, music, and fun, and the children represented the school beautifully.

The festive season was celebrated in true primary school style with wonderful nativity performances that showcased the children's confidence, teamwork, and creativity. Christmas parties brought plenty of joy and excitement, and the term ended on a high with Christmas Jumper Day, spreading kindness and festive cheer throughout the school.

Thank you to all pupils, staff, and families for their hard work, support, and enthusiasm this term. Wishing everyone a happy and restful holiday, ready to return refreshed and ready for more learning and adventures in the Spring term.

Mrs S McMahon  
*S. McMahon*  
Headteacher

## Reminders

All children should be in school for 8.30am



## Term Dates

### SPRING 1 TERM 2026

Monday 5th January 26  
- Friday 13th February 26  
~ HALF-TERM ~ Monday 16th February -  
Friday 20th February 26

### SPRING 2 TERM 2026

Monday 23<sup>rd</sup> February - Teacher Training Day  
Tuesday 24<sup>th</sup> February 26  
- Friday 27<sup>th</sup> March 26  
~ HALF-TERM ~ Monday 30<sup>th</sup> March -  
Friday 10<sup>th</sup> April

### SUMMER 1 TERM 2026

Monday 13th April 26  
- Friday 22<sup>nd</sup> May 26  
~ HALF-TERM ~ Monday 25th May 26 -  
Friday 29<sup>th</sup> May



# Diary Dates

Monday 5th January 2026	Children return to school.	
Friday 13th February 2026	Break up at 3pm for half-term	
Monday 23rd February 2026	Teacher Training Day	School closed to all children
Tuesday 24th February 2026	Children return to school	
Thursday 26th March 2026	Year 3 Religious Visit to St Michael's Church	Children must wear their uniform to school
Friday 27th March 2026	Break up at 3pm for Easter Holidays	
Monday 13th April 2026	Children return to school	

# Safeguarding

For school holiday support in Birmingham, parents can contact:

### Children's Advice Support Service:

Provides support and advice regarding children's welfare. They are available during the week and also have an emergency out-of-hours service.

- Monday to Thursday: 8:45 am to 5:15 pm
- Friday: 8:45 am to 4:15 pm
- Emergency out-of-hours: 0121 675 4806

### NSPCC:

Offers a helpline for child protection and welfare concerns.

- 0808 800 5000

### Domestic Violence Support:

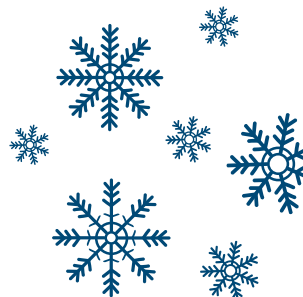
Birmingham City Council provides support for domestic violence situations.

- 0121 303 0368 or 0121 303 0369

### Gateway Family Services:

Offers early help services.

- 0121 456 7821
- email: [earlyhelpedgbaston@gatewayfs.org](mailto:earlyhelpedgbaston@gatewayfs.org)



Please like our Facebook Page to keep up to date with what's going on in school

[facebook.com/SevernePrimary](https://facebook.com/SevernePrimary)



## Staff Changes

At the end of this term, Mrs Pampols will be leaving Severne after 14 years of dedicated service, and Mrs Mahoney will be retiring following an impressive 46 years at our school. Both have made invaluable contributions to our pupils and the wider school environment.

Throughout their time at Severne, Mrs Pampols and Mrs Mahoney have demonstrated remarkable commitment and passion for supporting our pupils. Their efforts have not only enriched the educational experiences of countless children but have also fostered a nurturing and inspiring atmosphere within our school. We are truly grateful for their hard work and dedication over the years.

Miss Hawker will be moving from Reception to Year 1 for the rest of this academic year.

Mrs Malik will be returning to class 4MS from maternity leave in January 2026.



Please like our Facebook Page to keep up to date with what's going on in school

[facebook.com/SevernePrimary](https://facebook.com/SevernePrimary)



# Foodbank Help

Anyone can find themselves in a difficult situation, and support is available for families.

For self-referral of a foodbank voucher, contact The Trussell Trust on **0121 227 0103**. Phone lines are open **Monday to Friday, 9.30am - 12.30pm**.

Our local foodbank works closely with a range of agencies, including Citizens Advice, children’s centres, and health visitors, to ensure families receive the right help. These agencies can issue foodbank vouchers and also provide longer-term support to address the causes of financial hardship.

When visiting a referral agency, some basic details will be taken to complete the voucher. This helps identify the reason for the crisis and ensures the right amount of emergency food is prepared for each household.

Once a voucher has been issued, it can be exchanged for a minimum of three days of emergency food at the nearest foodbank centre.

For more information about local agencies that hold vouchers or to find out how to access support, please get in touch with the foodbank team.

Sparkhill Foodbank @ Church of the Ascension  
 School Rd, Hall Green,  
 Birmingham  
 B28 9DX  
 +44 121 708 1398  
[sparkhill.foodbank.org.uk](http://sparkhill.foodbank.org.uk)

Sparkhill foodbank  
 St John’s Church, Sparkhill  
 St Johns Rd,  
 Birmingham  
 B11 4RG  
 +44 121 772 7582  
[www.stjohnsparkhill.org.uk](http://www.stjohnsparkhill.org.uk)

<p>Acocks Green Food Bank</p>	<p>Contact details          Rear of 100 Westley Road B27 7UL</p>
<p>Tuesday and Friday 10am-12pm. This is an open-door food bank to those based in Acocks Green (B27 postcode and surrounding areas). Clients do not need a voucher to be referred: they simply come and get help.</p>	



## Food Pantries and Clubs

A food pantry or club is where you pay for your shopping but you will get more food than you would when shopping in a supermarket. For example, you may pay £4 but get roughly £15 worth of food.

Pantries often run like a shop, so you are able to choose the food that you want for your family. There may be a small sign up or membership fee.

You don't need a referral to access a pantry or club and can just turn up. Below is the information for local food pantries and clubs.

Please note that for the clubs run at Oasis Blakenhale and Fox Hollies, you must live or work within 15 minutes of the venue.

### Family Action Food Club

St Ambrose Barlow Catholic Church, Lakey Lane, B28 8QU  
Tuesdays, 12pm-2pm

### Oasis Hobmoor Food Pantry

South Yardley Methodist Church - B25 8JF  
Thursday 12:30pm - 3pm

### Glebe Farm Community Fridge

Glebe Farm Library - B33 9NA  
Tuesday 12pm - 2pm  
£1 to join then £3.50 a box

### Oasis Blakenhale Food Club

The Link Community Hub - B33 OXD  
Tuesday 12pm - 2pm  
Only during school term time

### Fox Hollies Food Club

Fox Hollies Children's Centre - B27 7QA  
Fridays 12pm - 2pm



Community Engage  
Foundation's

# GOOD FOOD CLUB

Live Simply, live well

THURSDAYS 2:30-4:15 PM

## £1 ANNUAL MEMBERSHIP THEN £5 A WEEK

Each week you pay £5 a box to receive a mix of fresh food and cupboard items and have access to our pop-up shop with discounted food and household items.

All welcome regardless of financial status, as long as you live within 4 miles of the club.

#help prevent food waste!

Get a box and stay for complimentary refreshments and activities. Signposting, advice and guidance also available upon request

St Ambrose Barlow Church Hall  
Lakey Lane  
Hall Green  
Birmingham  
B28 8QU



# COMMUNITY CAFE



Car Parking Available

Bus Routes:  
11a, 11c, 4a, A15

Complimentary refreshments  
Signposting, advice and guidance

Activities Every Week

OPEN TO ALL

**EVERY THURSDAY**

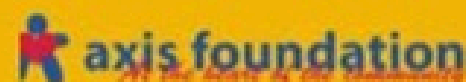
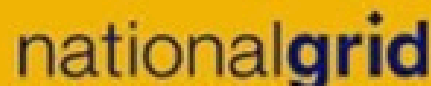
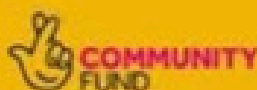
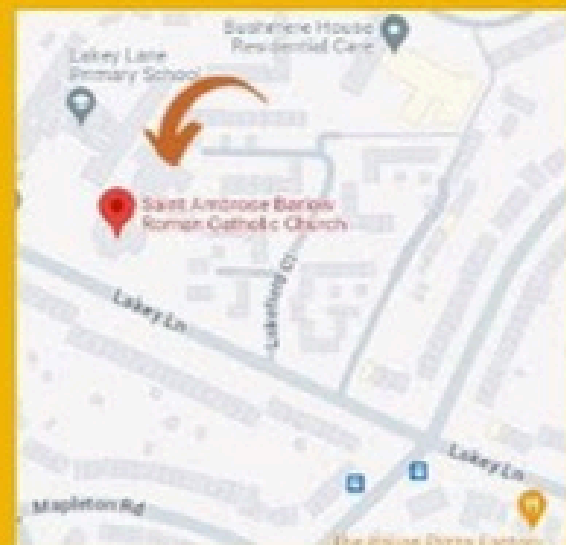
**2:30-5PM**

St Ambrose Barlow Church Hall

Lakey Lane, Hall Green

B28 8QU

For further information including what's  
on visit us on facebook



## What time does school start?

School starts at 8:30am.

Parents/carers should arrive at school at 8:25am so that once the doors are open at 8:30am, children can make their way into their classroom, enjoy the breakfast snack that is being offered and prepare themselves for the day ahead.

This is a really important part of the school day and allows children to settle, join their class friends and make the most of every moment.

Being late results in children having to enter a classroom when everybody else is settled and learning has already begun- this often causes distress and worry.

**PLEASE HELP YOUR CHILD BY GETTING THEM TO SCHOOL ON TIME AT 8:30AM EVERY DAY.**

## Uniform Hub

Each Wednesday between 8:15am and 8:30am, 'The Elsie Carter Room' will be opened to all Parents/Carers, please come along if you require uniform for your children as we have all sizes. **There is no cost for this uniform.** Please pop over and use this facility. We have lots of **new** uniform in many sizes available.

## Reception Place Applications

If your child was born between 1 September 2021 and 31 August 2022, they will be able to start Reception in September 2026 and you **MUST** apply for a place by the **15<sup>th</sup> January 2026** to attend our school.

This needs to be completed via the council website that you pay your council tax to. Should you require support with this, please make an appointment at the main school office and they will happily assist you with this.



Please download the My Child At School App

Respect ● Succeed ● Celebrate

# It's Christmas Time!



**A Parent's Guide to Social Media**



**A Parent's Guide to Sharing Pictures**



**A Parent's Guide to Gaming**



**A Parent's Guide to Online Grooming**



scan the QR code with your phone's camera to see the guides on our website



**A Parent's Guide to Live Streaming**



**A Parent's Guide to Online Influencers**



**A Parent's Guide to Fake News**



**A Parent's Guide to Privacy Settings**



## It's always best to be prepared

Many parents may be planning to give electronic gadgets to their children this festive period.

Our guide is designed to help parents take a realistic approach to help keep their children safe when using the internet, social media and playing online games.

Scan the QR code to find out more.

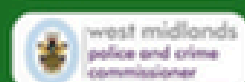
**Online safety is when young people know who they can tell if they feel upset by something that has happened online.**

Parents please contact your school to enquire attending their next e-safety workshop or have any concerns.

Working with Home Office 'PREVENT', The Police and Crime Commissioner and Children's Safeguarding Partnerships to help keep children safe online.

Skips Educational Email: info@skipsed.com Tel: +44 121 227 1941

Developed in partnership with





# Severne Primary School Uniform Policy



Uniform is **compulsory** including PE uniform. It's smart, comfortable and practical. It can be bought from most supermarkets.

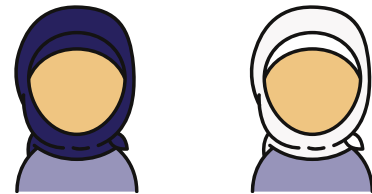


**Boys** - Navy blue sweatshirt, white shirt or polo shirt and grey trousers. For the summer months, grey school uniform shorts are acceptable.

**Girls** - Navy blue sweatshirt or cardigan, white shirt or polo shirt and grey skirt. Girls may also choose to wear grey trousers. Dark blue check gingham dresses may be worn during the summer months.



**Shoes** - Must be black school shoes or trainers  
(All items should be plain without logos or decorations.)



If headscarves are worn, they should be plain blue or white which are in keeping with uniform colours.

## PE

- plain (no logos) pale blue T-shirt or polo shirt
- Plain navy blue school shorts
- Plain (no logos) navy blue joggers/jogging suit for colder days



All children must have appropriate footwear and socks, it is recommended that younger children should have plain black Velcro fastening pumps or black trainers for easy access.

## SWIMMING

**Boys:** trunks must be swimming trunks and not summer shorts.

**Girls:** swimsuits must be one-piece suits and not 2-piece bikinis.

Please note: full body swimsuits (burqini) are permitted swimwear alternatively; lycra leggings and leotard can be used. Swimming caps are advisable but not essential.

All swimwear to be navy blue or black if possible.

## JEWELLERY

Jewellery is **NOT** permitted in school. Children are allowed to wear stud earrings only, there should be **NO** loops or drop earrings. This is to ensure the safety of our children in the playground.



# PLACES WHERE KIDS EAT FREE (OR FOR £1) CHRISTMAS 2025



[moneysavingcentral.co.uk/kids-eat-free](https://moneysavingcentral.co.uk/kids-eat-free)

## ANGUS STEAKHOUSE

Kids under 8 eat FREE daily, 12pm to 5pm

## ASDA

Kids eat for £1 daily, with no adult spend

## ASK ITALIAN

Kids under 10 eat for £1 during school holidays

## BELLA ITALIA

Children eat free Sunday - Thursday

## BILLS

2 Kids Eat Free on Boxing day 2025

## BEEFEATER & BREWERS FAYRE

2 Kids Eat Free Breakfast with one paying adult

## CAFE ROUGE

Kids Eat FREE 12-4pm every day of the week

## COCONUT TREE

Kids eat FREE from Fri 19th Dec - Sun 6th Jan 2026

## DOBBIES GARDEN CENTRES

Kids eat for £1 with an adult breakfast or lunch

## FUTURE INNS

Under 5s eat for free with any adult meal

## GORDON RAMSEY RESTAURANTS

Kids under 10 eat FREE all day, every day

## IKEA

Kids get a meal from 95p daily from 11am

## LAS IGUANAS

Kids under 12 eat FREE with 'My Las Iguanas' App

## MARSTONS PUBS

from 29th Dec - Jan 9th 2026 in selected locations

## MARCO PIERRE WHITE

Kids under 12 Eat FREE daily with an adult spend

## MORRISONS

Kids Eat FREE all day, every day with a £5 spend

## PAUSA CAFE @ DUNELM

Kids eat FREE with every £4 spend all day

## PREMIER INN

2 kids eat for free with 1 adult breakfast

## PRETO

Kids up to age 10 eat free with 1 paying adult

## PUREZZA

Kids under 10 get free pizza with every adult meal

## SA BRAINS PUBS

Kids eat for £1 on Wednesdays

## SIZZLING PUBS

Kids eat for £1, Every Monday to Friday, 3 - 7pm

## TABLE TABLE

2 Kids Eat free breakfast daily with 1 paying adult

## TGI FRIDAYS

Kids Eat Free with any adult meal (Via App)

## THE REAL GREEK

Kids under 12 eat FREE Sundays with £10 spend

## TRAVELODGE

2 kids eat for free with 1 adult breakfast

## WHITBREAD INNS

2 kids eat for FREE with 1 adult breakfast

## YO! SUSHI

Kids eat free all day (weekdays) in school holidays